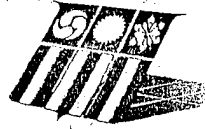


The James Myers Co., Inc.



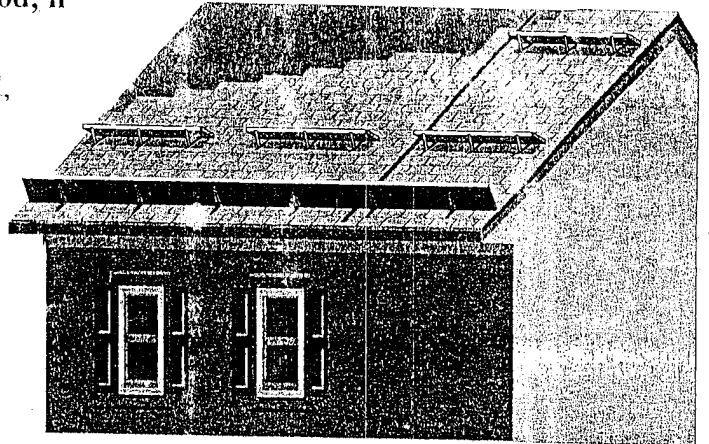
# TOOLBOX TALKS

Week #11

NATIONAL ROOFING CONTRACTORS ASSOCIATION • CNA COMMERCIAL INSURANCE

## Residential Fall Protection Option

- ☛ Slide guards are roofing brackets with 2" x 6" (nominal) planks.
- ☛ Projects that use residential-type roofing materials can use roofing slide guards as a fall protection method, if the following two conditions are met.
  - The lower eave is 25 feet or less from the ground, and
  - The slope is less than or equal to 8 in-12.
- ☛ For projects with a roof that has a slope less than or equal to 6-in-12...
  - Eave slide guards must be installed at a 90° (plus or minus 10°) angle to the roof surface.
  - This slide guard must be installed continuously along the eave.
  - No more than three courses of roofing material can be laid before the slide guard is installed.
  - Use a safety monitor system for first three courses.
- ☛ For projects that have a roof with a slope of greater than 6-in-12, up to and including 8 in-12...
  - Slide guards must be installed continuously along the eave.
  - Additional slide guards must be installed ascending the roof at intervals no greater than eight feet apart. These slide guards are required only under the work area.
  - The planks of the additional slide guards may be set at an angle more suitable for walking, if preferred.
- ☛ In general, material must be stored no closer than six feet to the rake edges.
  - Material can be no closer than six feet from the rake edge except for tile or metal roofing jobs where materials may be within three feet of the rake edge.
  - Roofing workers are not allowed to be any closer than six feet to the rake edge except to perform work.
  - The area below the rake edge must be free of impalement hazards.
- ☛ You are permitted to use a safety monitor system on tile and metal projects.
  - A safety monitor must be a competent person who can see and warn crew members if they are working unsafely or if they are close to fall hazards. The safety monitor can have other duties, provided they do not detract from his or her ability to serve as a monitor.



### Residential Fall Protection Option Training Tips

- If on a residential project, demonstrate correct installation of slide guards.
- Ask the following question:
  - When a roof is either greater than 8-in-12 or its eave height is greater than 25 feet from the ground, conventional fall protection systems must be used. What are some examples of conventional fall protection systems?